

Becoming an Innovative Global Healthcare

Company with Strengths in **S&T**
SCIENCE & TECHNOLOGY

Human Resources

- › Diverse range of talents with high levels of expertise
- › Scientific assessment capabilities
- › Technologies originated from craftsmanship
- › High levels of engagement
- › Desire for innovation

Core Technologies

- › Proprietary ADC technology platform
- › Medicinal chemistry, protein engineering, drug evaluation, computational science, and translational research

Corporate Culture

- › A corporate culture in which employees respect each other as a specialist in science, and exchange opinions in a free and open-minded manner, regardless of positions and tenure
- › A culture that promotes the transmission of experience and technologies for creating medicines

Driving Force for Value Creation

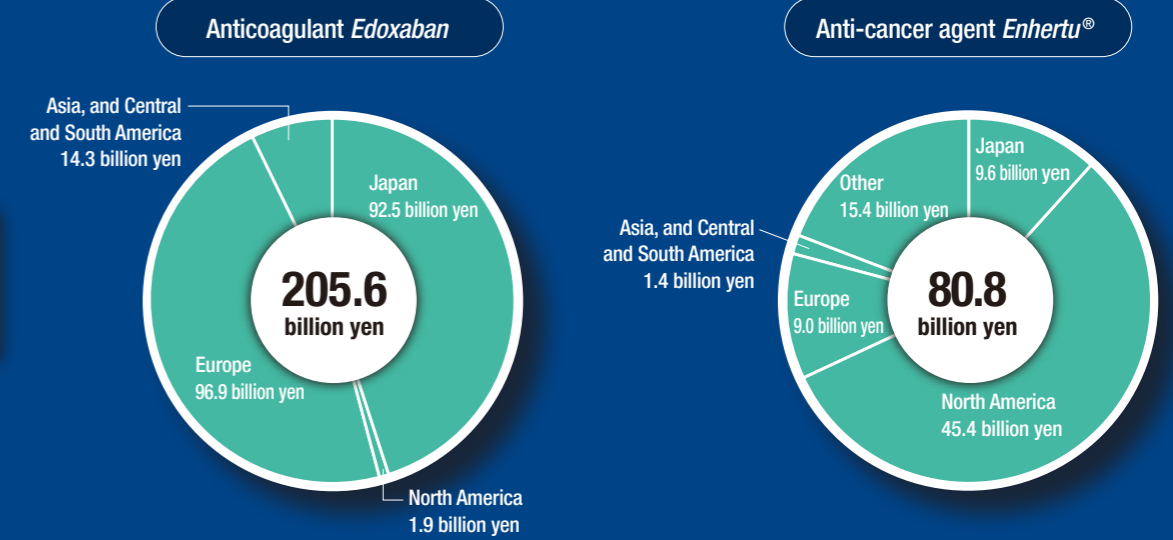
Science & Technology

SCIENCE & TECHNOLOGY

Business Activities and Areas

Revenues in FY2021: **1,044.9** billion yen

Major Products Worldwide



Number of employees by region



Key Non-Financial Indicators (FY2021 results)

<p>Countries where <i>Enhertu</i> has been launched:</p> <p>25 countries</p> <p>FY2025 Goals ▶ 40 countries or more</p>	<p>CO₂ emissions (compared to FY2015 levels)</p> <p>Reduction of 15.7 % (191,399 tons)</p> <p>FY2025 Goals ▶ Reduction of 42% (compared to FY2015 levels)</p>	<p>Percentage of renewable electricity used</p> <p>9.4 %</p> <p>FY2025 Goals ▶ 60% or more</p>
<p>Percentage of positive employee engagement survey responses*</p> <p>75 %</p> <p>FY2025 Goals ▶ 80% or more, or a 10% increase compared to FY2021</p>	<p>Percentage of female in senior managerial employees</p> <p>17.9 %</p> <p>FY2025 Goals ▶ 30%</p>	

*Global Culture Survey on corporate culture and work environment